

\$24,000 - \$26,000

AERIAL
 Σ
DESIGN

The Aerial Acoustics Model 20T embodies the sum of what we have learned about loudspeaker design. Every detail has been thoroughly considered, every design decision justified. The result is a remarkable loudspeaker system that faithfully reveals the spirit of music and film and stands as the benchmark for all Aerial designs. The Model 20T produces an astonishingly vivid, forthright, and wonderfully full-range sound with a lifelike quality that is startlingly real. Impeccably finished in painstakingly matched cabinets, it is ideally suited for those who treasure music and film and enjoy the richness of faithfully reproducing those experiences at home.

With a strikingly evident degree of naturalness, the Model 20T effortlessly reveals musical and acoustical details that normally remain hidden within recordings. This extraordinary sense of realism is not the result of a single factor, but of the relentless refinement of myriad design details combined into a cohesive, seamless whole. The Model 20T is at once capable of extreme resolution, vast dynamics, exceptional frequency extension, and unerring tonal accuracy.

All Aerial loudspeaker systems are designed and constructed with fanatical attention to quality and detail. Decades of design and manufacturing experience have taught us that craftsmanship and technology go hand-in-hand when creating products of uncompromising performance and genuine long-term value. World class manufacturing techniques and production equipment are employed, complemented by the work of skilled craftsmen when only experienced hands will do.

Aerial Acoustics. Every detail matters.



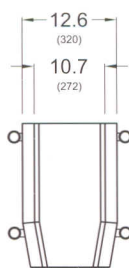
AERIAL

ACOUSTICS

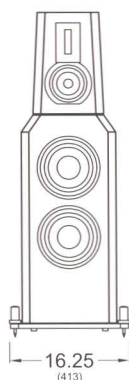
Model 20T

Specifications

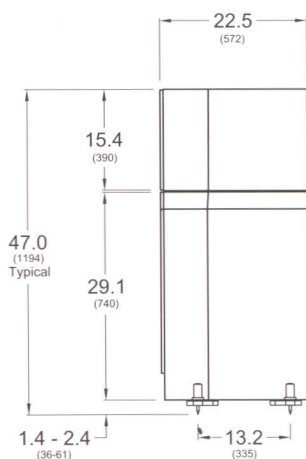
Top View



Front View



Side View



Model 20T

Frequency Response	27 Hz to 30 kHz \pm 2 dB. -8 dB at 23 Hz and 40 kHz
Sensitivity	90 dB at 2.83 V _{rms} and 1.0 meter on axis
Impedance	4 Ω nominal, 2.8 Ω minimum, low reactance
Power Requirements	50 to 800 watts (8 Ω rating) recommended
Woofers	Two 8.9" (225 mm) cast magnesium alloy frame drivers Damped bilaminate composite cones Massive vented magnet structures 2.0" (51 mm) diameter ultra-linear long-stroke coils
Midrange	7.1" (180 mm) cast magnesium alloy frame driver Carbon filament reinforced damped composite cone Large magnet structure with vented machined pole piece 1.6" (40 mm) diameter linear stroke coil
Tweeter	4.1" (105 mm) 5 micron pure aluminum ribbon Precision cast aluminum waveguide Massive ultra-high Gauss neodymium magnet structure High-power self-aligning diaphragm Acoustically damped tapered rear chamber
Crossover	300 Hz and 3.5 kHz at 24 dB per octave Linkwitz-Riley Large independent networks on glass-epoxy PCBs High-purity copper wiring with Teflon [®] insulation Ultra-premium passive components. Silver solder
Cabinet	Compound constrained layer damped 2" thick walls Isolated, individually-optimized bass and head enclosures Extensive interlocked bracing. Tongue and groove joints Mirror-imaged matched pairs in fine architectural veneers Limited edition exotic veneers and high gloss finishes
Connections	Four gold-plated WBT binding posts with copper jumpers Bi-wire and bi-amp capable. Head unit cable included
Included Bases	Laser-cut solid steel bases including stainless steel spikes, machined hardware, and floor protectors Gold, silver, or black finishes
Dimensions HWD	Head cabinet 15.4 x 10.7 x 22.5" (390 x 272 x 572 mm) Bass cabinet 29.1 x 12.6 x 22.5" (740 x 320 x 572 mm) Assembled 47.0 x 12.6 x 22.5" (1194 x 320 x 572 mm)
Weight Each	252 lbs (115 kg). 346 lbs (157 kg) packed

Limited Edition
Sapele Pommele

Limited Edition
Tuscan Sycamore

Gloss Basalt

Gloss Titanium

Gloss Black

Rosewood

Bird's Eye Maple

Aerial Acoustics
100 Research Drive
Wilmington, MA 01887
USA

Tel: 978.988.1600
Fax: 978.988.1661
E-mail: contact_us@airiacoustics.com
Web: www.airiacoustics.com

Fine Textured Black

Black Ash

Natural Cherry